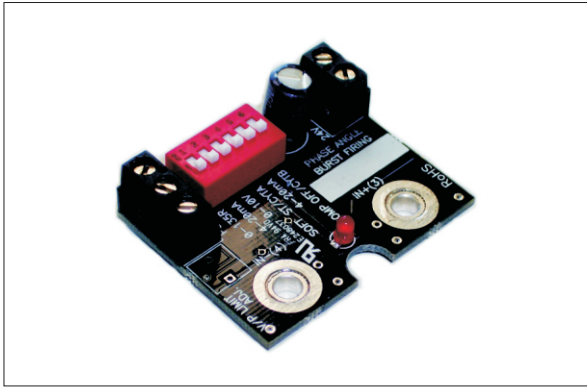


# Fast Synchronous Burst Firing Module for SSRs SSRMAN-1BFS



- **Fast Synchronous Firing Algorithm**
- **0.02-1% Control Resolution**
- **Zero Cross Firing**
- **Line Voltage Compensation**
- **Input accepts 4-20mA, 0-10V, 0-5V, 0-135 Ω, Pot**
- **Drives multiple solid state relays (SSRs)**
- **Small module mounts on SSR input terminals**
- **Adjustable Power Limit (-PL) Option**
- **Single phase and three phase control**
- **LED output indicator**

## Product Description

The SSRMAN-1BFS mounts directly on the input connections of a SSR and provides 0-100% fast synchronous zero cross burst firing (time proportioning) based on the input signal. The SSRMAN-1BFS can be dipswitch configured for up to six different industry command signals and four different cycle times.

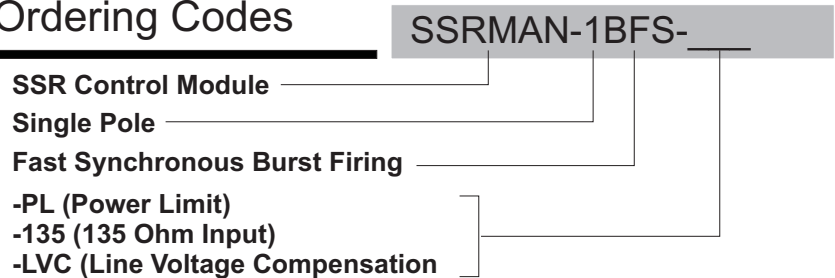
## Input Specifications

Power Supply	24VAC +/-15%, 65mA max
Command Inputs	4-20mA, 0-20mA, 0-5V, 1-5V, 0-10V, 2-10V, 0-135Ohm, Pot, PWM
Command Input Impedance	10K (0-10V), 250 Ohms (4-20mA), 100K (0-5V)
0-135Ohm Excitation Current	13mA
External Potentiometer resistance	10-25KOhm

## Output Specifications

Control Output (24VAC Nom. PWR)	SSR Drive, DC Pulse, nominally 10V @ 15mA
Response Time	16mS (or cycle time value)
Resolution	See Cycle Time Table
Linearity	1.5% (mA, pot, volts), 5% ( 0-135 Ohm)

## Ordering Codes



## Output Specifications(cont.)

Power Limit Adjustment Range      10-100% of max. output power

## Cycle Time Table

Dip Switch 6	Dip Switch 4	#of cycles	Cycle Time (60Hz)	Cycle Time (50Hz)	Resolution (% of FS)
*OFF	*OFF	~16	266mS	320mS	~1%
ON	OFF	60	1S	1.2S	1.66%
OFF	ON	600	10S	12S	0.166%
ON	ON	6000	100S	120S	0.0166%

## Thermal Specifications

Operating Temperature Range      0 to 60 degC

Storage Temperature Range      -40 to 100 degC

## Dip Switch Selections

Command Input	1	2	3	5
0-5V (Default)	OFF	OFF	OFF	OFF
Potentiometer	OFF	OFF	OFF	OFF
0-10V	OFF	OFF	ON	OFF
4-20mA	OFF	ON	OFF	ON
1-5V	OFF	OFF	OFF	ON
2-10V	OFF	OFF	ON	ON
0-135Ω*	ON	OFF	OFF	OFF

## Dimensions

